



Ontelaunee Township

35 Ontelaunee Drive, Reading, PA 19605



Fall/Winter 2025

Township information

Board of Supervisors

Board of Supervisors

Josh Steingraber

Charles Grebloski

Jeremy Hoagland

Secretary/Treasurer

Kim Y. Berger - Ext. 200

ontelauneetownship@comcast.net

Water/Sewer Department

Shelly Freeman, Ext. 208

Email: otws@comcast.net

Tax Collector

Sharon Sweigert-610-926-4240 ext. 204

Email: ontelauneetc@comcast.net

Office number: Fax number:

610-926-4240

610-926-5476

Address:

35 Ontelaunee Drive,
Reading, PA 19605

Email :

ontelauneetownship@comcast.net

Website:

www.ontelauneetwp.net

Office Hours:

Monday thru Friday 9 a.m. to 3 p.m.

Meeting Schedules

*all meetings are open to the public
and held at the township building*

Board of Supervisors

1st Thursday of the month at 7 p.m.

Planning Commission

3rd Thursday of the month at 7 p.m.

OFFICES ARE CLOSED:

October 12, November 3,

November 26, November 27

December 24, December 25,

January 1



FALL FIRE HYDRANT FLUSHING

will be taking place October 6th through October 10th from approximately 7:00 am – 3:00 pm. As a result, you may experience cloudy or discolored water. If this occurs, please run the water for a few minutes until it clears. The water is safe for all uses and consumption.

DESIGNATED TRICK OR TREAT NIGHT

October 31, 2025

6 p.m. to 9 p.m.

If you would like trick and treaters to stop at your home, please leave your porch light on.



PROPERTY AND SCHOOL TAXES

Taxes may only be paid by check or money order. You may not pay taxes on XpressBill pay where you pay your water/sewer bills.

**Tax Collector regular hours are Tuesdays ONLY from
9 a.m. to 1 p.m. or by appointment.**



UPCOMING ROAD WORK UPGRADES TO LAKESHORE DRIVE AND ONTELAUNEE DRIVE

The intersection of Lakeshore Drive (SR 0073) and Ontelaunee Drive will see significant improvements in the coming months.

Based on the recent development in the area, the intersection will be upgraded to meet the existing and future traffic demands. The design and funding for the improvements is provided by the recent warehouse project and manufacturing facility to the south of Lakeshore Drive. Traffic Impact fees provided to the Township by other nonresidential developments and the Pennsylvania Department of Community and Economic Development Grant will supplement the developer funding.

Turning lanes, new traffic signals, lane widening and stormwater improvements are all in store for the intersection. The improvements are likely to start in the fall of 2025 and continue into the Spring of 2026. Be aware of changing traffic patterns in the area during construction. A little inconvenience for a positive outcome!

RECYCLING INFORMATION



Ontelaunee Township offers free Single Stream Recycling to our residents. Single Stream Recycling allows participants to place their recyclables in one container without sorting or separate bins.

The single stream dumpsters are located behind the Township Building. Residents are welcome to drop their recyclables in the dumpsters from dawn to dusk seven days a week. The area is monitored by security cameras. The Township does not provide pick-up or recycling containers.

The dumpster is emptied three times a week for added convenience to residents.

Acceptable:

Aluminum cans, glass food & beverage containers (brown, green & clear), plastics (#1 thru #7), paper and cardboard. - In order to use all the space in the dumpster please smash or crush your plastic and cardboard.

Not Acceptable:

Pots, pans, aluminum foil, ceramic oven-ware, drinking glasses, window glass, mirror glass, light bulbs, Styrofoam, clay pots, plastic bags, foil type paper, paper towels, tissue paper.



Leaves, brush and limb recycling can be taken to:

Berks Soil and Stone, 1 Bellemen's Church Road,
Leesport, 610-916-8301

2025 PAPER SHREDDING EVENT

Held by Berks County Solid Waste Authority

Free to Berks County Residents

October 11, 2025

8 a.m. to 12 noon

at

Berks County Ag Center
1238 County Welfare Road
Leesport, Pa. 19533

All residents must pre-register to participate in our paper shredding event.
<https://www.berkspa.gov/departments/solid-waste-authority>



2025 HAZARDOUS MATERIAL COLLECTION EVENT

Free to Berks County Residents

October 18, 2025 (8:00 AM - Noon)

at Berks County Ag Center
1238 County Welfare Road
Leesport, Pa. 19533

All residents must pre-register to participate in our hazardous waste collection event
<https://www.berkspa.gov/departments/solid-waste-authority>

Absolutely no Latex Paint will be accepted
Put all empty containers in your regular trash collection

WATER & SEWER INFO



Winter Weather

In addition to performing routine winter home maintenance, it's crucial to safeguard your pipes against freezing. Even a small crack can lead to the release of hundreds of gallons of water, resulting in water damage to the home and its contents.

Tips to prevent frozen pipes

- **Insulate pipes.** Because exposed pipes are more susceptible to freezing, pipe insulation in your home's crawl spaces and attic may help even if you live in a climate where freezing is uncommon.
- **Try heat tape or heat cables.** Heat tape or thermostatically controlled heat cables may be used to wrap pipes. Consider using products for the intended use (exterior or interior) and those approved by an independent testing organization. Carefully follow all manufacturers' installation and operation instructions.
- **Seal leaks.** Look for air leaks around electrical wiring, dryer vents and pipes. Thoroughly seal leaks with caulk or insulation to help keep the cold out.
- **Secure outdoor hoses, valves and faucets.** Before winter hits, disconnect garden hoses and, if possible, use an indoor valve to shut off and drain water from pipes leading to outside faucets. This may help prevent freezing of the short span of pipe just inside the house.
- **Adjust the thermostat.** Keeping your thermostat set at the same temperature day and night may help prevent frozen pipes. During extreme cold, this may also help reduce the strain on the furnace.
- **Open cabinet doors.** This allows heat to better get to uninsulated pipes under sinks and appliances near exterior walls.

Keep F.O.G out of your drains!

What is FOG?

FOG is the excess of fats, oils and grease from the cooking process left behind from certain foods. During the holidays we tend to cook more, resulting in excess FOG. In addition to thanksgiving turkey, FOG is a byproduct of cooking many food products such as cooking oil, butter and margarine, lard, Sauces, meat fat, and dairy products. Excess fats, oils, and grease should never be poured down the sink, or flushed down the toilet. FOG that's poured into the sink or toilet will harden in the pipes and may cause backups in your plumbing and sewer system. To dispose of FOG; can it, cool it, and throw it away.

LOW PRESSURE ISSUES – MCINTOSH FARMS

Ontelaunee Township is moving forward to resolve low water pressure east of Adams Road on Ida Red Drive. Regulations require Ontelaunee Township to provide entrance water pressures of 20 pounds per square inch (PSI); however, Ontelaunee Township realizes residents would be more satisfied with a water PSI in the range of 35-40 and above.

Ontelaunee Township has directed their consultants to move forward on resolving low water pressure on Ida Red Drive. The Reading Area Water Authority (RAWA) supplies water to the Township. Ontelaunee Township is responsible for its distribution to customers.

RAWA and Ontelaunee Township recently met regarding the issues with water pressure and RAWA provided a resolution that would entail upgrading at least two of the three pumps located in the booster station. Ontelaunee Township and RAWA executed a Memorandum of Understanding that provides assurances to RAWA that Ontelaunee Township will reimburse RAWA the cost of the design, permitting, bidding and construction of the upgrades. RAWA authorized their consultant to commence the design of the upgrades on June 30, 2025

The process of design, permitting, construction and equipment acquisition for the improvements will unfortunately be much longer than anyone desires. The entire process could extend into the spring or early summer of 2026 with numerous variables determining the exact timeline.

BE PREPARED FOR WINTER WEATHER

When winter weather begins and a snow emergency is called, all vehicles must be removed from snow emergency routes to allow the streets to be plowed and salted.

The following are the snow emergency routes in Ontelaunee Township.



Calais Drive (entire length)

Hannibal Lane

Verdun Drive (entire length)

Nantucket Drive (entire length)

Edinboro Lane (entire length)

Adams Road (entire length)

Indian Manor Drive from Bellemans Church Road to Gernants Church Road

Gernants Church Road from Indian Manor Drive to Loose Lane

Sunglo Drive (entire length)

Ida Red Drive from its intersection with Fuji Drive, located in the Harvest Subdivision, and continuing through the McIntosh Farms II Subdivision to the end of the curbed portion of Ida Red Road being located at the eastern end of the McIntosh Farms II Subdivision.

KEEP FIRE HYDRANTS CLEAR OF SNOW

House fires occur more frequently in the wintertime – primarily because of the hazards associated with heating a home. In an emergency, every second matters. Fire hydrants that are blocked, concealed, or difficult to access due to snow can impede emergency fire response.

You can do your part to help emergency fire responders by keeping nearby fire hydrants accessible and clear of ice and snow. In addition to removing the snow that is covering the hydrant itself, it is important to clear a 3-foot perimeter around the hydrant, and to maintain a shoveled path from the street or driveway to the fire hydrant, so that it is visible from the road and firefighters can easily access it. Keeping hydrants clear of snow can mean easier access to water, and more time doing what really matters – fighting the fire.

Help keep your home and family safe from winter fire hazards by ensuring the fire hydrants in your neighborhood are clear and readily accessible in an emergency.

Before you know it the first snowflakes will be falling. You need to be prepared for any type of winter weather, snow, sleet, freezing rain, etc. The road crews whether it be a Pa Dot driver or a township driver, they all need your patience and assistance during any snow or ice event.

Please remove the vehicles from the street to give the driver ample room to maneuver the plow, even if you are not on a snow emergency route. Your help will make clearing the snow a lot easier.

All major streets will be done first. After the initial pass, the plow will return to widen the path.



Prevent street flooding by clearing catch basins near your home to allow rain and melting snow to enter the drainage system.

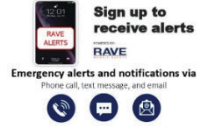
All snow plows are angled the same way (to the driver's right) and will automatically push the snow that direction. It is impossible for the equipment operators to avoid pushing snow into cleared driveways and sidewalks. If you must clear your driveway prior to the completion of snow plowing, please keep in mind that the snow that is in front of the plow will unload wherever there is a cleared area. This is why snow is left in a cleared driveway as the street is plowed. Clearing an area on the side of the driveway from which the plow approaches will provide an area for the snow to unload before it reaches your driveway. This area needs to be at least five feet long and two to three feet wide.

It is unlawful to shovel, plow or snowblow any snow into the street or roadway.

Any property owner/tenant of every property fronting any street in the township is asked to remove from the sidewalks all snow or ice that has fallen within 24 hours after any snow event. Please have a path of 36 inches wide cleared.



In the event of an emergency, we utilize Rave call out service to inform our residents of any incidents which would affect our residents or our sewer or water customers. If you have not signed up for notifications, please send us an email with your name, telephone number, and property address. Submit your info to: ontelauneetownship@comcast.net



****If your contact information changes, such as phone numbers or email addresses, please contact the township office to correct our records.**

BUILDING/ZONING/CODE ENFORCEMENT

**Zoning Officer Township Office hours
Mondays and Wednesdays 11 a.m. to 1 p.m.
unless the building is closed due to a holiday.

Our Building Inspector/Code Enforcement is handled by Kraft Municipal Group, office number is 610-777-1311

Please visit their website at www.kraftmunicipalgroup.com to obtain permit applications.

Please submit your completed application along with a plot plan, and the application fee of \$50 for residential applications and \$150 for commercial applications to the township office. The application fee will be deducted from the permit fee.

PUBLIC WORKS DEPARTMENT



Left to Right: Israel, Zak, Andrew and Mike
The Township Public Works Department continues to manage the roads, water and sewer operations and the township property as well as maintaining the park system.





Northern Berks Regional Police Department

Serving the residents of Maiden Creek Township, Ontelaunee Township, and Leesport Borough

Contact Information

Northern Berks Regional Police Dept
37 Ontelaunee Drive, Reading, PA 19605
Records office hours between 8 a.m. and 4 p.m. Monday-Friday

Office: (610) 926-2999

Fax: (610) 926-0309

As we head into fall, please remember that the schools are open again, and be alert for school buses and students. It is very dangerous, and also illegal, to pass a school bus (in either direction) with its red lights flashing and could result in a child being struck by a car or the violator losing their driving privileges.

With the change in seasons, and turning the clocks back, it's a good time to change the batteries in your smoke detectors. Many fires are caused by "space heaters" which will be popular when the colder weather is here, so use caution if you have these. Make sure you don't "overload" your electrical outlets when you plug these in.

Also, be sure to watch our Facebook page for announcements regarding a Halloween trick-or-treat event at the NBRPD Police Station. The date and time will be published on our Northern Berks Regional Police Facebook Page.

Take time to enjoy the fall colors, football games, and everything that autumn provides. Too soon, we'll be dealing with the ice and snow of winter.



NORTHERN BERKS EMS – HERE FOR ONTELAUNEE TOWNSHIP

Proudly Serving Your Community

Northern Berks EMS takes pride in serving the residents of Ontelaunee Township. With two stations providing 24/7 coverage, 365 days a year, our dedicated EMTs and paramedics are always ready to respond when you need us most.

AHA Education Site

As an American Heart Association education site, our certified instructors are available for **CPR and First Aid certification courses**—helping you and your family be prepared for any emergency.

Our Commitment to You

We are committed to delivering the best care possible—quickly, compassionately, and professionally. Your safety and well-being remain our top priority.

Communication

As our neighbors we do our best to keep an open line of communication with all of you. To learn more about us you can visit our website www.northernberksems.com or visit our facebook and Instagram pages. Email us at info@northernberksems.com with any general questions or to request further information on our CPR and First Aid classes.

"Your Friends at Northern Berks EMS"

UNION FIRE COMPANY NO. 1 OF LEESPORT



18 East Wall St.
P.O. Box 777
Leesport, PA 19533
Non-Emergency: 610-926-4090

Emergency: 911

Upcoming events:

Tuesday 10/14 Fire Prevention - Open House

The National Fire Protection Association has announced that the theme of the 2025 Fire Prevention Week is "Charge into Fire Safety™: Lithium-Ion Batteries in Your Home." The theme works to better educate the public how to buy, charge, and dispose of lithium-ion batteries safely. Fire Prevention Week will take place October 5-11. Your Leesport volunteers will be hosting an open house on Tuesday October 14th where the station will be open for refreshments, tours, and demonstrations. This is also a great opportunity for the public to ask questions and get to know our volunteers and learn about how everyone can help keep the community safer!

Sunday 10/19 125th Anniversary BINGO

Join us for an afternoon of clean fun and a chance to win CASH PRIZES! Donations of baked goods (individually wrapped or cakes/pies) gladly accepted to be sold to help raise additional support for our Firefighting/Equipment fund. Please contact us in advance to let us know if you plan to donate so we can arrange drop-off the day before.

Saturday 11/1 Harvest Moon at the park

Your volunteers will be on-hand assisting the Leesport Area Historical Society with portions of this nice Fall event! Reminder that your fire company consists of ALL VOLUNTEERS – we need additional volunteer support to keep us going for another 125 years!! You do not need to go into a burning building to be a volunteer – exterior firefighters, drivers, support personnel, and administrative personnel are all a part of the make up of our company – the opportunity to help a neighbor on what may be their worst day costs nothing other than some of your time – please ask us how you can help be a part of our future! All ages 14+ are welcome to join – your community will thank you!!

Please stay tuned to our Facebook page for more information on all these events as they grow closer!!

BERKS COUNTY MEDICATION DROP BOX PROGRAM

Free disposal of unused, unwanted or expired medications.

Accepted: prescription and over the counter medications, including pet medications, ointments, inhalers, powder or patch form medication.

NOT accepted: any loose pills not in standard container or bag, syringes, thermometers, bandages, sunblock, lipstick, deodorant or skin creams.

List of locations where these items can be dropped off in our area

- Bern Twp. Police Department - 1069 Old Bernville Road, Bern Twp.
- Berks County Detectives - Berks County AG Center, 1238 Welfare Road, Leesport
- Fleetwood Police Department - 110 West Arch Street, Fleetwood
- Muhlenberg Twp. Police Department - 5401 Leesport Avenue, Muhlenberg

See other locations at the link below

<https://www.countyofberks.com/departments/da/programs/prescription-drop-box>





Ontelaunee Township

35 Ontelaunee Drive,
Reading, PA 19605

PRSRT STD
ECRWSS
U.S. POSTAGE
PAID
EDDM RETAIL

Local
Postal Customer

STORMWATER INFORMATION



Who is the Berks County MS4 Steering Committee?

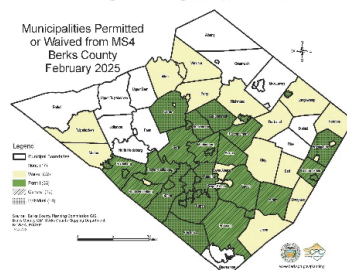
The Berks County MS4 Steering Committee is an intergovernmental committee made of Berks County Municipalities and three Cooperative Education Partners which include the Berks County Planning Commission, Berks Nature and the Berks County Conservation District. The Cooperative Education partners and the municipalities work together to educate everyone on why clean stormwater is important.

What is a Municipal Separate Storm Sewer System (MS4)?

An MS4 is a state, city, town, borough, county, parish, district, association, or other public body that contains a drainage system which conveys only stormwater. The drainage system is made up of curbs, gutters, basins, storm pipes, ditches, swales and municipal streets. The system Does Not include pipes that convey sanitary sewer.

What is an MS4 Permit?

The MS4 Permit is designed to help reduce the discharge of pollutants from the regulated small MS4, to the maximum extent practical, to protect water quality, and to satisfy the appropriate water quality requirements of the Clean Water Act and the Pennsylvania Clean Streams Law. The permit requires the development and implementation of a Storm Water Management Program (SWMP). The SWMP features six Minimum Control Measures (MCMs). Each MCM requires implementation of specific Best Management Practices (BMPs) to meet measurable goals according to an approved schedule.



How implementation of the six minimum control measures happens:



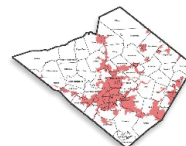
MCM 1 Public Education and Outreach

The Berks County MS4 Steering Committee, including the education partners, work together to help educate the community about MS4 regulations and stormwater management.



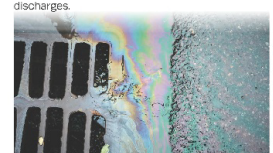
MCM 2 Public Participation/Involvement

Berks County municipalities designated as MS4 regulated urbanized areas (either participating/not participating in the Berks MS4 Steering Committee) provide opportunities for residents and the public to become engaged with and help implement stormwater management practices. This could include public cleanup efforts, outreach efforts, and more.



MCM 3 Illicit Discharge Detection and Elimination

Municipalities will implement strategies to monitor illicit discharges of substances or materials other than stormwater entering into storm sewer systems. This may include creating a storm sewer system map, creating an ordinance prohibiting illicit discharges, creating a plan to detect and address illicit discharges, and implementing an education program about the hazards associated with illicit discharges.



MCM 4 Construction Site Runoff Control

The Berks County Conservation District (BCCD) oversees the administration of NPDES permitting and compliance in the County. NPDES permits include plans to control for Erosion and Sediment associated with construction activities, which ensure that stormwater leaving construction sites and entering our watersheds is clean and clear.



MCM 5 Post-Construction Runoff Control

The Berks County Conservation District (BCCD) and municipalities oversee the permitting and construction of Post-Construction Stormwater Management (PCSM) plans. The Berks County Planning Commission provides review and comment of proposed storm water controls during their land development review process.



MCM 6 Pollution Prevention/Good Housekeeping

Municipalities continue to maintain and monitor the storm sewer system to be sure the system is functioning properly and prevent pollution events from occurring. Additionally municipal employees do regular training to fulfill permit requirements.